



MAX-A-FORM FORMING SYSTEM

The Max-A-Form Forming System combines the labor-saving benefits of modular forming with the strength of an all-steel design. It is ideal for gang forming heavy structural walls and columns where there is repetition, multiple lifts, or when a smooth finish is required. The structurally welded frame and steel face also can support concrete loads over long spans without the need for shoring.

Max-A-Form panels are constructed with a 3/16" steel face plate and heavy duty crossmembers that support higher pour rates. Panels up to 8' wide by 20' long are rated at 1500 psf; 9' and 10' wide panels are rated at 1200 psf; 12' wide panels are rated at 1000 psf. The rigidity of the Max-A-Form panels virtually eliminates the need for waler or strongback requirements and reduces the number of ties required.

Whether used alone or integrated with other Symons forming systems, Max-A-Form is engineered to minimize labor and material costs associated with heavy-duty concrete forming applications.

MAX-A-FORM SYSTEM FEATURES

Simple wall forming

Forms are assembled easily using a 1/2" Speed Bolt and Nut. Panels are punched with a combination of holes and slots in both the top and the side framing to allow easy alignment and quick assembly regardless of panel orientation.

Panels are available in more than 100 sizes, from 2' wide by 1' long to 10' wide by 20' long. 12' wide panels are furnished in a maximum of 8' lengths. The large number of filler choices allows more gang and detail flexibility. Large, 200 square foot panels mean fewer pieces, fewer panel joints and less labor to assemble.

Versatile tie systems are available with capacities and configurations to maximize cost effectiveness for each application.

Taper Ties and She-Bolts are used with Plate Washers or Cast Bearing Washers and nuts for efficient flat and battered wall applications. Ultimate loads on Taper Ties are 50,000 or 96,000 lbs. and She-Bolts are 50,000 or 85,000 lbs.

External top and bottom ties are available in several lengths and adjustment ranges to accommodate a wide range of wall thicknesses and special applications.



Beams and Pier Caps

The Max-A-Form 3/16" steel face and integrated structural steel frame provide support over long spans with no need for labor intensive shoring. This is especially useful for beam and pier cap applications where shoring support is impossible.

Stability Beams and Pier Cap Braces, Spreader Beams, Top Tie/Lift Brackets, Bottom Ties with Swivel Screw Jacks, Walkway Brackets, and other Max-A-Form accessories also are available for self-spanning applications.

MAX-A-FORM ACCESSORIES

Complicated details are handled easily with Max-A-Form corner accessories and products to provide transition to other Symons forming systems.

Columns/Piers

Columns can be gang-formed, using Max-A-Form Hinges that allow the entire form to be stripped in one piece. Columns as large as 12' square can be formed without ties.

Corner Options

Double-Duty, Combination Rigid Corner halves bolt up to produce straight, 90 degree corners that are easy to strip or provide a 45 degree filler when used as a single form.

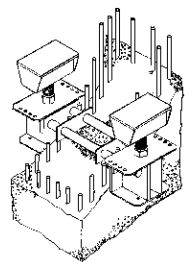
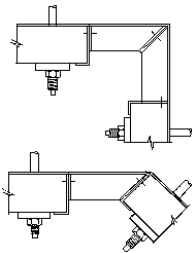
Inside Stripping Corners allow easy stripping of gangs adjacent to corners or pilasters.

Anchor Brackets and Friction Collars

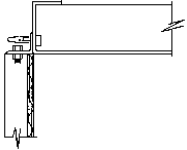
Anchor Brackets and Friction Collars are available in several configurations to meet specific forming requirements.

Anchor Brackets, in 70 and 140 KIP sizes, provide heavy duty capability for concentrated self-spanning loading applications. Height adjustments are made through the use of high capacity screw jacks. Multiple-hole positioning provides support for overhanging pier caps.

Friction Collars provide high capacity, anchorless support without the high cost and labor needed to place or finish imbedded anchors or thru rods. Round Friction Collars will support 96 KIPs for columns up to 36" in diameter; a little less for larger diameters. Adjustable Rectangular Friction Collars will support 20 KIPs on columns 12" to 24" on a side.



MAX-A-FORM RELATED SYSTEMS



System Transitions

Transitions to Steel-Ply® and Flex-Form® are accomplished directly through the punched holes provided in the side and end rails. Transition to Versiform® is accomplished with a Flex-Form filler or at an outside corner using a Steel-Ply Transition Outside Corner.

Even plywood may be used as a filler using the Filler Angle.



Circular Columns

All-steel, Circular Column Forms are rated at 3,000 psf to allow maximum pour rates. Max-A-Form circular columns also include ladder mounts and lifting lugs.

Circular Column Forms feature complete column form assemblies, including two half forms come in a variety of standard sizes. Heights of 1', 2', 3', 4', 6', 8', and 10', plus common diameters ranging from 18" to 96" are available.

The Max-A-Form forming system allows fast bullnose forming when equipped with half-sections of Circular Column Forms. It is the most efficient way to form this common feature.