

# MISCELLANEOUS TOOLS

[www.stetsonbuildingproducts.com](http://www.stetsonbuildingproducts.com)

## EXTENSION LADDERS

### **FIBERGLASS EXTENSION LADDERS**

Louisville Ladders

Aluminum Plate Connection Rungs

D-Shaped or Round Rungs

Mar-Resistant Rail End Caps

Louisville Ladder's Full Metal Boot

QuickLatch™

**STETSON STOCKS A LARGE VARIETY OF LOUISVILLE LADDERS!  
DIFFERENT HEIGHT AND POUND VARIANCES IN STOCK!  
PLEASE CALL US FOR YOUR SPECIFIC NEEDS. 20', 24', 28', 32', 36'**

### **Louisville Ladders**

DON'T SEE SOMETHING YOU NEED?

CALL US & WE'LL GET IT FOR YOU!

PLEASE CALL ANY OF OUR LOCATIONS FOR YOUR SPECIFIC NEEDS!



## SCRUB AND WIRE BRUSHES

### **WIRE WHEEL & CUP BRUSHES**

Makita

Stetson Building Products stocks a variety of wire wheels. Crimped & Knotted. Variety of sizes of arbors available.



Cedar Rapids, IA (800) 383-7272 • Des Moines, IA (800) 383-2181  
Dubuque, IA (800) 894-6272 • Grand Island, NE (800) 228-8572



### **BLACK CURVED HANDLE WIRE BRUSH**

The Brush Man

Tempered Steel Wire

ITEM	# 092062	14X1
	# 092064	10X1
	# 092065	14X1 WITH SCRAPER
	# 092066	11 1/2 X 1 1/2 WITH SCRAPER
	# 092067	10X 1 1/8 WITH SCRAPER

## **ACID/TAMPICO BRUSHES**

### **8 1/4" ACID SCRUB BRUSH**

The Brush Man

8-1/4" wood block, white tampico fill, tapered handle hole, 1-1/4" trim

ITEM # 092006



### **WHITE TAMPICO BRUSH**

The Brush Man

Synthetic block, white tampico fill, 2" trim

ITEM	# 092014	SHORT HANDLE
	# 092015	LONG HANDLE



### **R3KT 3 KNOT WHITE TAMPICO FILL ROOF BRUSH**

The Brush Man

3 knot roofing brushes - 3-1/2" trim. Tapered handle hole. Tampico fill.

ITEM # 119052



### **BL119 PLASTIC ACID BRUSH**

Kraft Tool

ITEM # 318026



### **BL120 TAMPICO ACID BRUSH**

Kraft Tool

ITEM	# 318028	
	# 318100	LONG HANDLE



# MISCELLANEOUS TOOLS

www.stetsonbuildingproducts.com

## SPECIALTY BRUSHES



### **PLASTIC SYNTHETIC BRUSH**

The Brush Man

Synthetic block, synthetic fill, 2" trim.

ITEM # 092016 LONG HANDLE  
# 0292017 SHORT HANDLE



### **CB86 8" COUNTER BRUSH**

The Brush Man

8" counter brush, horsehair/synthetic blend fill, 2-1/2" trim, fine sweep

ITEM # 092040



### **MAG190 12" CONCRETE FINISHER'S BRUSH, HORSEHAIR**

Magnolia Brush

Soft Horsehair. Staple set in clear lacquered hardwood block. Two rows of soft horsehair make this an ideal brush for applying a fine brush finish on small area concrete jobs such as patch jobs, concrete stairs and concrete curbs.

ITEM # 119063

## BROOMS, MOPS



### **COTTON MOP HEAD DROP PLY W/SCREWHEAD**

Luco Mop Company

Mixed plied yarns, does a heavy-duty job. 100% cotton. Uses 6', 7' or 8' handles with screw adapter. Screw Type fitting holds mop securely to handle. Easy to attach or remove.

ITEM # 753398 24 OZ.  
# 753400 40 OZ.  
# 753408 48 OZ.

Cedar Rapids, IA (800) 383-7272 • Des Moines, IA (800) 383-2181  
Dubuque, IA (800) 894-6272 • Grand Island, NE (800) 228-8572



### **MAR830 24" CONCRETE BROOM**

Marshalltown Trowel

- Long wearing 2 3/4" black polypropylene bristles set solidly into a natural lacquered hardwood block
- Threaded hole accepts any standard broom handle
- Ideal for applying non-slip finish to newly finished concrete surfaces
- Made in the U.S.A.

ITEM # 161136



### **HORSEHAIR & SYNTHETIC BRUSH**

The Brush Man

Fine synthetic center, horsehair and synthetic border, 3" trim. No matting or laying over of bristles. Our best fine sweep for smooth floors.

ITEM # 092002      FB224P 24"



### **MEDIUM-STIFF BROOM**

The Brush Man

Medium stiff synthetic center, flagged synthetic border, 3" trim. All purpose brush sweeps fine dust yet will sweep heavy debris effectively. No matting or curling. Can be used just about anywhere.

ITEM # 092003	FB2930	30"
# 092004	FB2918	18"
# 092005	FB2924	24"



### **COARSE BROOM FOR HEAVY SOILED AREAS**

The Brush Man

Stiff synthetic fill, 3" trim for all coarse or outside sweeping. No matting or laying over of bristles.

Our best coarse sweep.

ITEM # 092009	FB1618S	18"
# 092010	FB1624S	24"

# MISCELLANEOUS TOOLS

[www.stetsonbuildingproducts.com](http://www.stetsonbuildingproducts.com)



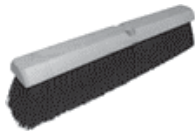
## **WR40 CORN/WHSE BROOM ROOFERS BROOM**

The Brush Man

Heavy rattan fill! Wire band, 4 sew,

For roofers serious about gravel sweeping - more rattan than all others! Largest corn broom on the market!

ITEM # 092058



## **FLOOR BROOM, CENTER WIRE, TAMPICO BODY**

The Brush Man

Wire center with tampico fill, 3" trim. For heavy foundry dust. Does not flip the fine dust. The tampico will matt but the bristles can't lay over - the wire center holds it up.

ITEM # 092061      FB818T 18"  
# 119130      FB824T 24"

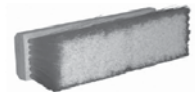


## **FB924 24" FINE FLOOR BROOM**

The Brush Man

Gray flagged synthetic fill, 3" trim. Bristles won't lay over but the split ends really load up. Not recommended around wet areas or sweeping compound.

ITEM # 119138



## **STUCCO APPLICATOR BRUSH**

10" Magnolia Brush

Center rows filled with Cream Color Plastic and border rows filled with Red Color Plastic. Staple set in clear lacquered hardwood block with two threaded handle holes.

ITEM # 336230

Cedar Rapids, IA (800) 383-7272 • Des Moines, IA (800) 383-2181  
Dubuque, IA (800) 894-6272 • Grand Island, NE (800) 228-8572



### **FINISH BROOM**

Kraft Tool

- Perfect for brushing down concrete after floating
- Available in aluminum and wood heads
- Width choice of 24", 36" or 48"
- Brooms accept wood or aluminum extension handles

ITEM	# 318153	CC156 36" WEIGH-LITE
	# 318156	CC165 24" W/ METAL THREAD HANDLE
	# 318158	CC166 36" W/METAL THREAD HANDLE
	# 318162	CC173 48" WOOD CEMENT FINISH BROOM
	# 318166	CC177 36" ALUMINUM CEMENT FINISH BROOM
	# 318168	CC178 48" ALUMINUM CEMENT FINISH BROOM
	# 318174	CC188 48" CONCRETE FLOOR BROOM W/ METAL THREAD HANDLE



### **16" WHITE STREET BROOM**

Magnolia Brush

Heavy gauge white plastic staple set in smooth sanded hardwood block. Durable long lasting plastic will outlast natural fiber. Will not absorb odors, mildew, rot or discolor. Will not absorb water and rinses clean. Wide flare on ends allows close sweeping to curbs. Recommended Use: For wet or dry sweeping where a rugged broom is required on rough surfaces such as concrete or asphalt street gutters, dairy barns, highway construction, etc.

ITEM # 119044



### **FINE FLOOR BROOM FLAGGED PLASTIC**

Magnolia Brush

Flagged-tip silver grey plastic. Staple set in clear lacquered flattop hardwood block. Recommended Use: For sweeping smooth, highly polished floors, varnished wood or smooth concrete. Will sweep finest dust or grit. DO NOT USE WITH OIL BASE SWEEPING COMPOUNDS.

ITEM # 119140 MAG3736 36"

# MISCELLANEOUS TOOLS

www.stetsonbuildingproducts.com

## SQUEEGEES



### **3/16" SERRATED SQUEEGE**

The Brush Man

Serrated edge non-marking floor squeegees - steel-back. Spreads material uniformly. Stiff, grey non-marking 1/4" x 2" serrated rubber blade. Steel handle socket.

ITEM # 092039 FS18SE316 18"  
# 092041 FS24SE 24"



### **24" NOTCHED SQUEEGE**

The Brush Man

Good quality wood-back applicator for small jobs.

Inexpensive enough that it can be thrown away after the job is completed. Non-Sparking. 3/16" thick blade.

ITEM # 331190 FSWB24N



### **BLACK FOAM, DOUBLE EDGE STEEL FRAME SQUEEGEE**

Magnolia Brush

Squeegee for tough work. Ideal for workshops and large areas. Galvanized steel frame with a splashguard and reinforced handle socket. Available in black natural rubber and in oil resistant neoprene. Will accept standard, diameter handle, tapered or square cut.

ITEM # 092045 30"



### **STRAIGHT BLACK SQUEEGE W/TAPERED SKIRT**

Magnolia Brush

ITEM # 119093	24"	NEOPRENE STRAIGHT
# 119094	30"	NEOPRENE STRAIGHT
# 119095	36"	NEOPRENE STRAIGHT
# 119097	24"	NEOPRENE CURVED
# 119098	30"	NEOPRENE CURVED
# 119099	36"	NEOPRENE CURVED



Cedar Rapids, IA (800) 383-7272 • Des Moines, IA (800) 383-2181  
Dubuque, IA (800) 894-6272 • Grand Island, NE (800) 228-8572

## REPLACEMENT HANDLES

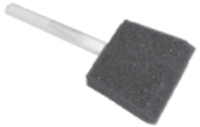


Stetson Building Products, Inc. stocks a wide variety of replacement handles for brooms, kumalongs, and fresno's.

AVAILABLE IN WOOD, TAPERED WOOD, ALUMINUM

## PAINT BRUSHES

### FOAM BRUSH WITH WOOD HANDLE



Brush Man

ITEM	# 092036	2"
	# 092037	3"
	# 092038	4"

### PURE NATURAL BRISTLE PAINT BRUSH



Brush Man

White China Bristle (Plain Wood Sanded Handle) These 'one time use' brushes stay in one piece while using.

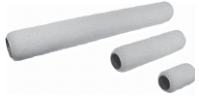
ITEM	# 092052	1/2"
	# 092055	1"
	# 092056	2"
	# 092057	3"
	# 092053	4" (SHORT TRIM)
	# 092054	4"

# MISCELLANEOUS TOOLS

www.stetsonbuildingproducts.com

## PAINT ROLLERS & ROLLER COVERS

### **ROLLER COVERS**



Brush Man

Description

These covers are the best you can buy for applying adhesives and tough solvent applications. Our nap is put onto a standard 1-1/2" phenolic core with a 2-part epoxy to prevent delamination.

ITEM	# 092020	4" 1/2" NAP
	# 092021	3" 3/8" NAP
	# 092023	4" 3/8" NAP
	# 092042	9" 1/4" NAP
	# #092084	9" 1/2" NAP
	# 092047	9" 3/8" NAP
	# 092050	9" 1 1/4" NAP
	# 092060	18" 3/8" NAP
	# 092086	18" 1/2" NAP
	# 334045	18" 1/4" NAP

### **HEAVY DUTY FRAME**



Brush Man

9" heavy duty roller frame, 5/16" stem for maximum strength.

5-wire cage, reinforced handle hole.

ITEM	# 092025	4"
	# 092035	3"
	# 092046	9"

## PAINT TRAYS & LINERS

### **9" HEAVY DUTY POLY PAINT ROLLER TRAY**



Brush Man

ITEM # 084852

Cedar Rapids, IA (800) 383-7272 • Des Moines, IA (800) 383-2181  
Dubuque, IA (800) 894-6272 • Grand Island, NE (800) 228-8572



### **TRASH BAGS 42GAL, 3 MIL, BLACK CONTRACTOR CLEAN UP BAGS**

20 BAGS PER BOX

Brush Man

Compare these trash bags with any you have used!

Ask for a sample - poke holes in the sides, then see how strong it is and how tough it is to tear. Try that with your current bag - you will be as convinced as we are - this is the only bag to stock for all contractors.

ITEM # 092031



### **METAL PAINT TRAY**

Brush Man

ITEM # 092029

## **TARPAULINS**

### **BLUE POLYETHYLENE TARP**

8X8 STRAND

GROMMETS EVERY 3FT

ITEM	# 710501	8'X10'
	# 710502	10'X12'
	# 710503	10'X16'
	# 710504	10'X20'
	# 710510	16'X20'
	# 710512	20'X20'
	# 710514	20'X30'
	# 710516	20'X40'
	# 710518	30'X40'
	# 710519	30'X50'
	#710520	30'X60'