

REINFORCING STEEL

www.stetsonbuildingproducts.com

STOCK AND FABRICATED REBAR 2.1

REBAR CHAIRS 2.1

SLAB BOLSTERS 2.2

MESH-FLAT & ROLLS 2.4

TIE WIRE 2.4

REINFORCEMENT ACCESSORIES 2.5



REINFORCING STEEL

www.stetsonbuildingproducts.com

STOCK AND FABRICATED REBAR

REINFORCING STEEL:

Available as stock 20' lengths or fabricated.

We offer complete estimating, detailing, & fabricating services.

Epoxy coating available for special orders.

BAR SIZE	US METRIC	DIAMETER	WEIGHT	WEIGHT	GRADES & TYPES
#3	#10	0.375	0.376	0.560	GRADE 60
#4	#13	0.500	0.668	0.994	GRADE 40 & 60, EPOXY
#5	#16	0.625	1.043	1.552	GRADE 40 & 60, EPOXY
#6	#19	0.750	1.502	2.235	GRADE 60, EPOXY
#7	#22	0.875	2.044	3.042	GRADE 60
#8	#25	1.000	2.670	3.973	GRADE 60
#9	#29	1.125	3.400	5.060	GRADE 60
#10	#32	1.270	4.303	6.404	GRADE 60

REBAR CHAIRS



Rebar Support Chairs can be used for at grade or precast applications with the use of #3 through #5 rebar or post-tension cable.

- Rod snaps easily into chair
- Wide base allows chair to stand securely
- Eliminates wire tying
- Non-corrosive durable polypropylene
- Non-conductive, perfect for bridge decks

Rebar supports are available in a variety of sizes.

Plastic High Chair w/out Plate

#322142	1"
#322143	2"
#322167	5"

Plastic High Chair with Plate

ITEM #322120	1 1/2"
#322169	2"
#322148	2 1/2"
#322170	3"
#322144	4"

Cedar Rapids, IA (800) 383-7272 • Des Moines, IA (800) 383-2181
Dubuque, IA (800) 894-6272 • Grand Island, NE (800) 228-8572

Individual High Chair

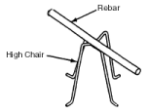


Individual High Chair is used to support upper steel directly or by means of a carrier bar. Available in bright basic, plastic protected, galvanized and stainless steel protected. (Not all available in stock).



Brite

#322129	1 1/2"
#322130	2"
#322140	3"
#322143	3 1/2" INDIVIDUAL PLASTIC
#322145	4"

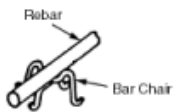


Plastic Tip

#412059	2"
#412060	2 1/2"
#412062	3"
#412063	4"
#412064	5"
#412065	6"

Bar Chair

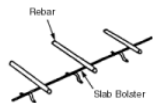
Bar Chair is used to support widely spaced light steel in slab construction. Available in 3/4" to 2" heights in bright basic, plastic protected, galvanized and stainless steel protected. (Not all available in stock).



#322126	1" WITH PLASTIC PROTECTED LEGS
#322125	1 1/2" WITH PLASTIC PROTECTED LEGS
#322127	2" WITH PLASTIC PROTECTED LEGS

SLAB BOLSTERS

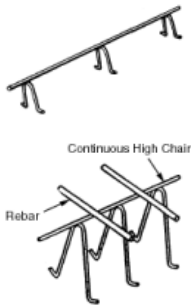
Slab Bolster is used to support lower slab steel from the slab form. Legs are spaced on 5" centers. Available in 3/4" to 3" heights in 5' lengths and in bright basic, galvanized, plastic protected or stainless steel protected. (Not all available in stock).



ITEM	#322133	3/4" WITH PLASTIC TIPPED LEGS	5' LENGTHS
	#322135	2 1/2" UPPER	5' LENGTHS
	#322138	1" WITH PLASTIC TIPPED LEGS	5' LENGTHS
	#322139	1 1/2" WITH PLASTIC TIPPED LEGS	5' LENGTHS
	#332137	2" WITH PLASTIC TIPPED LEGS	5' LENGTHS
	#332145	2 1/2" WITH PLASTIC TIPPED LEGS	5' LENGTHS
	#332139	3" WITH PLASTIC TIPPED LEGS	5' LENGTHS
	#332147	3" WITH PLATE	5' LENGTHS
	#412102	3" UPPER	5' LENGTHS

REINFORCING STEEL

www.stetsonbuildingproducts.com

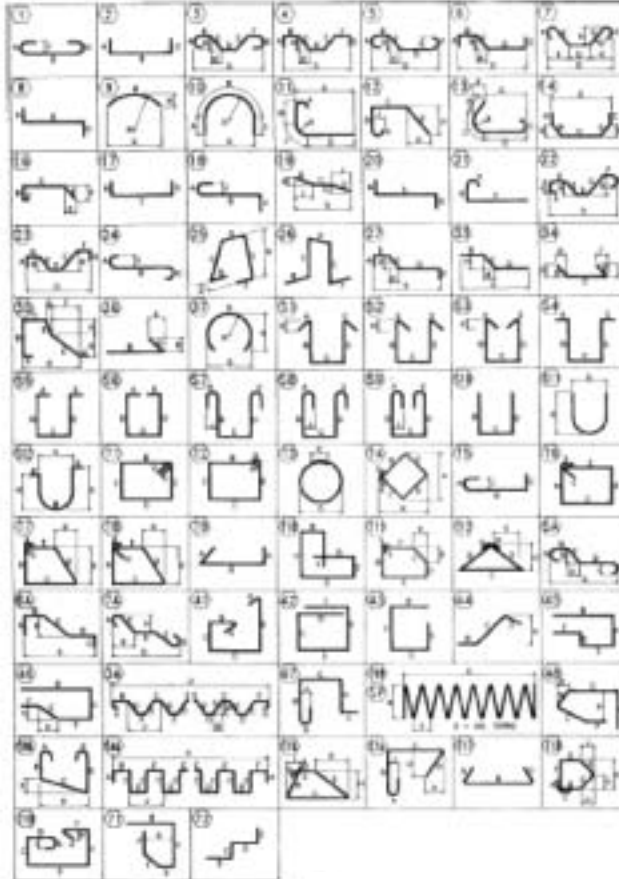


Continuous High Chair:

Continuous High Chair provides support for upper slab steel, eliminating the need for carrier bars. Fabricated in 2" to 15" heights, in 5" lengths with legs spaced on 8" centers. Available in bright basic, plastic protected, galvanized and stainless steel protected. (Not all available in stock).

Available in a variety of sizes and heights.

Typical Rebar Bends



Cedar Rapids, IA (800) 383-7272 • Des Moines, IA (800) 383-2181
Dubuque, IA (800) 894-6272 • Grand Island, NE (800) 228-8572

MESH-FLAT & ROLLS

Welded Wire Fabric

CURRENT DESIGNATION	PREVIOUS DESIGNATION	STEEL AREA SQ. IN PER FT.	APPROX. LBS PER	TYPES STOCKED
6 X 6-W1.4 X W1.4	6 X 6 - 10 X 10	0.028	21	SHEETS & ROLLS
6 X 6-W2.1 X W2.1	6 X 6 - 8 X 8	0.040	29	SHEETS
6 X 6-W2.9 X W2.9	6 X 6 - 6 X 6	0.058	42	SHEETS

TIE WIRE



Mar-Mac Coil/Tie Wire, black annealed, and bonded plastic coated, is drawn, annealed, and coated. It is used for tying reinforcing steel. Soft and flexible, it comes in one continuous piece of wire per coil, with no tangles, no crossovers, and no tight spots. It comes off the reel like it's supposed to.

ITEM #322180	16-GAUGE TIE WIRE 3 1/2" POUND COIL	EACH
#322185	16-GAUGE TIE WIRE 3 1/2" POUND COIL	CASE (20 ROLLS)
#322187	16-GAUGE EPOXY COATED TIE WIRE	EACH
#322188	16-GAUGE EPOXY COATED TIE WIRE	CASE (20 ROLLS)

Bar Ties



Made from wire drawn and annealed from high-quality rod, Mar-Mac Wire Ties are a quick and efficient means of tying reinforcing steel (bar ties), and for closing packages of various types, including paper, plastic and fabric (bag ties). Wire Ties are also used for tying vines to trellises, and for securing rolls of paper, knit goods, carpets and cloth.

Measurements:

Wire Ties are measured from tip to tip. The standard loop is 5/16" I.D. For new applications, wire length should be specified 1" greater than the closed circumference

ITEM: #322204	4" BAR TIE	5000 PER BUNDLE
#322205	5" BAR TIE	5000 PER BUNDLE
#322206	6" BAR TIE	5000 PER BUNDLE
#322207	7" BAR TIE	5000 PER BUNDLE
#322208	8" BAR TIE	5000 PER BUNDLE
#322209	9" BAR TIE	5000 PER BUNDLE
#322210	10" BAR TIE	5000 PER BUNDLE
#322212	12" BAR TIE	5000 PER BUNDLE
#322214	18" BAR TIE	2500 PER BUNDLE
#322216	6" PVC COATED	5000 PER BUNDLE
#322215	7" PVC COATED	5000 PER BUNDLE

REINFORCING STEEL

www.stetsonbuildingproducts.com



Bar Tie Twister

ITEM # 322200

Coil Wire

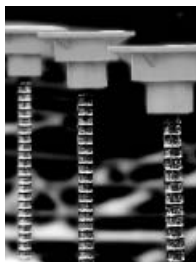
Coil Wire for general tying, handling, and bundling. Each roll is tied securely to insure a tight, uniform package.

ITEM	#332187	#9 COIL WIRE	100# COIL	APPROXIMATELY 1,700 LINEAL FEET PER ROLL
	#332189	#12 COIL WIRE	100# COIL	APPROXIMATELY 3,369 LINEAL FEET PER ROLL
	#332191	#9 COIL WIRE GALVANIZED	50# COIL	



REINFORCEMENT ACCESSORIES

Rebar Caps



- Complies with Federal OSHA 701 (b).
- Federal OSHA has ruled that if cover is in compliance with Cal OSHA, then it conforms to Fed. 701 (b).
- Made of engineered high-impact plastic.
- 4x4 top surface area aids in protection.
- Fits a range of diameters.
- No exposed steel parts.
- Inspection hole to insure metal insert in place.
- Fits Rebar sizes #3 to #7.

ITEM	#322375	3/8" TO 1"	100 PER PACK	500 PER BOX
	#322377	7/8" TO 2 1/4"	50 PER BOX	
	#322381	#3 TO #7 BAR	25 PER BOX	
	#322383	#7 TO #11 BAR	25 PER BOX	

Cedar Rapids, IA (800) 383-7272 • Des Moines, IA (800) 383-2181
Dubuque, IA (800) 894-6272 • Grand Island, NE (800) 228-8572

Concrete Test Cylinders

Concrete Test Cylinders meet all ASTM and AASHTO standards

Reinforced lip and bottom keeps cylinder uniform. Standard flat or domed lid available.



ITEM	#322175	6X12 CONCRETE TEST CYLINDER	LIGHT GRAY	36 PER CARTON
	#322177	6" DOMED LID		200 PER CARTON
	#322178	4"X8" CONCRETE TEST CYLINDER W/LID	LIGHT GRAY	36 PER CARTON