

DEKFAST INSULATION PLATES 2 7/8" HEX RECESS GALV 1000/BX

SFS Intec

Recessed Galvalume Steel Hex Insulation Plate

Plate hub is recessed to provide a low profile when used with 1/4" hex head fastener.

Use with:

- #12 Dekfast hex washer head

ITEM # 757820

MISC ROOFING ITEMS

SNOW SHOE KIT CLEAR (LARGE)

Chemlink

ITEM # 792804

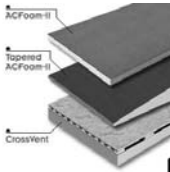
POLYISOCYANURATE

POLY ISO

Rigid roof insulation panel composed of a closed cell polyisocyanurate foam core. Bonded on each side to fiber reinforced facers.

AVAILABLE IN A VARIETY OF SIZES.

MANUFACTURES: ATLAS/HUNTER/GENFLEX/FIRESTONE



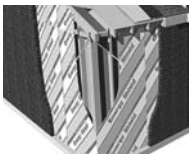
ENERGY SHIELD

Atlas Energy Product

Foil Faced Polyisocyanurate

ITEM # 724049 1 1/2" X 4' X 8'

724050 2" X 4' X 8'



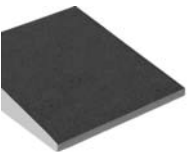
POLY-ISO TAPERED PANELS

Tapered Polyisocyanurate panel with a built in slope for water drainage purposes.

AVAILABLE IN A VARIETY OF SIZES.

1/8", 1/4", 1/2" SLOPES AVAILABLE

MANUFACTURES: ATLAS/HUNTER/GENFLEX/FIRESTONE



ROOFING PRODUCTS

www.stetsonbuildingproducts.com



PERLITE

ZONOLITE MASONRY FILL, 4 CU FT BAG

W.R. Grace

Zonolite Masonry Insulation, available in four (4) cu. ft. bags, is lightweight, free-flowing, inorganic vermiculite, specially treated for water repellency. It has a dry loose weight density of 4.5-7.0 lbs./ft.(3) and is capable of supporting its own weight, so it will not settle. Zonolite Masonry Insulation is free-flowing vermiculite used to insulate masonry wall cores or cavities.

ITEM # 717480

WOOD FIBER

1 1/2"X3 5/8"X48 WOODFIBER CANT STRIP

Knight Celotex Corporation

Strips of wood fiberboard.: 45 degrees and fits at the angle change.

ITEM # 724030



WOODFIBER TAPERD EDGE STRIP

Knight/Celotex Corporation

Strip of tapered wood fiber board.

ITEM # 724033	1/2" X 6" X 48"
# 724035	1 1/2"X12"X48"
# 724036	1 1/2"X18"X48"



DENS DECK

G-P Gypsum Corporation

Moisture resistant/fire resistant gypsum based fiberglass reinforced sheet used in roofing systems as a thermal barrier.

ITEM	# 751269	1/4" X 4' X 8' **PRIMED**
	# 751270	5/8" X 4' X 8'
	# 751273	1/4" X 4' X 8' 42 SH/PLT
	# 7512735	1/2" X 4' X 8'



H.D. FIBERBOARD

Knight/Celotex

High density Fiberboard Roof Insulation is a uniform density, non-asphaltic board with good insulating properties. Composed of interlocking fibers of cellulosic material treated for additional strength and moisture resistance, it is an excellent general-purpose roof insulation that is especially well suited for installations requiring unusual strength and rigidity.

ITEM	# 751274	1/2" X 4' X 4'
	# 751275	1" X 4' X 8'
	# 751278	1/2" X 4' X 8'