

# THERMAL/WATERPROOFING/ DOORS

www.stetsonbuildingproducts.com



## **SANDO-SEAL**

Sandell Manufacturing

Sandell's Sando-Seal is a fully adhered, self-adhering, in wall flashing membrane for use with concrete masonry, gypsum or wood wall construction. Sandell's Sando Seal is a 40mil membrane that is composed of a highly adhesive rubberized asphalt compound. This product is integrally bonded to a high density, cross-laminated polyethylene film. Joined together these materials provide strong and flexible waterproofing layers that insure moisture protection.

ITEM # 761307 18" X 75' ROLL

# 761309 12" X 75' ROLL

---

## **METAL FLASHINGS**

### **3 oz. COP-R-KRAFT/TEX DUPLEX FLASHING**

Advanced Flashing

A full copper sheet weighing 1, 2, 3 or 5 oz. per square foot bonded between two layers of waterproofed, creped kraft paper with a plasticized asphalt compound. The 3 and 5 oz. weights are reinforced with glass fibers to meet GSA, FHA and Corps of Engineers specifications. This strong but flexible masonry flashing will give you economical and permanent moisture protection.

ITEM # 761306 3' X 60' ROLL

## **INSULATION**

### **EXPANDED POLYSTYRENE**

#### **POLYSTYRENE (Bead Board)**

MEPS is a closed-cell material that can be molded into many everyday items, such as coffee cups and shipping materials, or into large sheets as construction insulation. This material is commonly known as "beadboard," and it has an R-value of about 4 per inch of thickness [2.54 cm]. The physical properties of MEPS vary with the type of bead used, but the density of the board is usually one pound per cubic foot (16.3 kilograms per cubic meter.)

**PLEASE CALL FOR DETAILS.**

**VARIETY OF BOARD SIZES AND THICKNESSES ARE AVAILABLE. 3/4", 1", 1 1/2"L, 2", 2 1/2" AVAILABLE IN 4' X 8' SHEETS AND 2' X 8' SHEETS**

Cedar Rapids, IA (800) 383-7272 • Des Moines, IA (800) 383-2181  
Dubuque, IA (800) 894-6272 • Grand Island, NE (800) 228-8572

**SMI BOARD (EIFS Foam)**

Expanded polystyrene, similar to “bead board”, for use with the Senergy EIFS System. Must be an approved applicator.

PLEASE CALL FOR DETAILS

VARIETY OF BOARD SIZES AND THICKNESSES ARE AVAILABLE.

3/4", 1", 1 1/4", 1 1/2", 2", 3", 4", & 5"

AVAILABLE IN 2' X 4' SHEETS

**EXTRUDED POLYSTYRENE****R-TECH X EXPANDED POLYSTYRENE 1 SIDE FOIL SCORED**

Insul-Foam

R-Tech is film-faced EPS that is a lightweight, yet tough rigid foam panel. As a single-ply underlayment, R-Tech is provided in a quick and easy fanfold configuration or in standard durable, watertight, highly flexible sheathing dimensions. R-Tech provides a smooth resilient underlayment for EPDM, EP, TPO, and PVC membranes. R-Tech's optional reflective metallicized film facer reduces the high surface temperature risk typically associated with styrene insulations in conjunction with exposed black single-ply membranes.

ITEM # 723191 2" X 4' X 8'

**FOAMULAR INSULATION 250 BOARD**

Owen Corning

Owens Corning FOAMULAR 250 extruded polystyrene insulation is ideal for wall furring, perimeter/ foundation, cavity wall, crawlspace, pre-cast concrete, under slab, roofing systems, sheathing and other applications. Owens Corning's patented Hydrovac<sup>®</sup> process technology make the unique closed-cell structure of FOAMULAR insulation highly resistant to moisture, retaining its initial R-value\* year after year - even following prolonged exposure to water leakage, humidity, condensation, ground water and freeze/ thaw cycling.

High R-value (R-5 per inch of product thickness). Compressive strength of 25 psi.

ITEM # 726506	1/2" X 4' X 8' SHEET
# 726507	3/4" X 4' X 8' SHEET
# 726508	1" X 4' X 8' SHEET
# 726509	1 1/2" X 4' X 8' SHEET
# 726510	2" X 4' X 8' SHEET
# 726511	3" X 4' X 8' SHEET
# 726512	2" X 2' X 8' SHEET
# 726513	2 1/2" X 4' X 8' SHEET
# 726514	4" X 2' X 8' SHEET
# 726515	1" X 2' X 8' SHEET
# 726516	4" X 4' X 8' SHEET
# 726517	2" X 42" X 8' SHEET
# 726528	1" X 4' X 8' SHEET (TONGUE & GROOVE)

Omaha, NE (800) 383-1272 • Rockford, IL (800) 383-3808  
Rock Island, IL (800) 383-1240 • Waterloo, IA (800) 383-2959



# THERMAL/WATERPROOFING/ DOORS

[www.stetsonbuildingproducts.com](http://www.stetsonbuildingproducts.com)



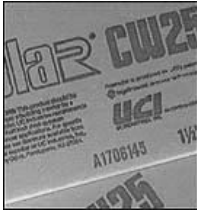
## **FOAMULAR INSULATION 150 BOARD**

Owens Corning

Owens Corning FOAMULAR 150 extruded polystyrene insulation is ideal for wall furring, perimeter/foundation, cavity wall, crawlspace, pre-cast concrete, under slab, sheathing and other applications. Owens Corning's patented Hydrovac™ process technology makes the unique closed-cell structure of FOAMULAR insulation highly resistant to moisture, retaining its initial R-value year after year - even following prolonged exposure to water leakage, humidity, condensation, ground water and freeze/thaw cycling.

High R-value (R-5 per inch of product thickness). Compressive strength of 15 psi.

ITEM	# 726518	1" X 4' X 8' SHEET
	# 726519	1 1/2" X 4' X 8' SHEET
	# 726520	2" X 4' X 8' SHEET
	# 726521	3" 4' X 8' SHEET
	# 726524	1 1/2" 2' X 8' SHEET
	# 726525	2" X 2' X 8' SHEET



## **FOAMULAR INSULATION CW 15 & CW25**

Owens Corning

Unlike some rigid foam insulation, FOAMULAR extruded polystyrene insulation is virtually impervious to moisture. This moisture-resistant property - along with its high R-value, lightweight, competitive price and wide range of sizes - makes it ideal for use in a cavity wall system.

- Highly stable R-value for predictable insulating performance
- Low capillarity and outstanding moisture resistance
- Meets ASTM C578 Specifications
- Pre-cut 16" wide boards yield fast, labor-saving installation
- "Split-Pak" packaging keeps boards clean and dry on jobsite

An insulated masonry cavity wall has an R-value near 3. One inch of FOAMULAR insulation can increase that to R-8; two inches to R-13. FOAMULAR insulation does not rely on degradable facers for long-term R-value retention.

**Material:** Extruded polystyrene closed cell foam panel with integrated continuous skins on face and back surfaces.

### **Weight (for 1" thick board):**

Approx. 125 lbs/msf (CW15),

Approx. 150 lbs/msf (CW25)

ITEM	# 726531	2" X 15 7/8" X 8' SHEET (CW15)
	# 726532	2" X 15 7/8" X 8' SHEET (CW25)

## **1/4" x 4' x 50' FAN FOLD UNDERLAYMENT BOARD**

Owens Corning

FanFold re-siding insulation board meets the highest standards for new or retrofit siding applications. It does not require a plastic laminate and cuts, scores and snaps cleanly for easy handling and installation. In addition to its insulating benefits, FanFold offers excellent moisture resistance to help maintain its long-term energy-efficiency. The panels also have superior dimensional stability and are resistant to vermin, decay or corrosion.

FanFold is a closed-cell, rigid, nonstructural, lightweight extruded polystyrene foam board with a continuous skin on face and back surfaces.

ITEM # 726535



# THERMAL/WATERPROOFING/ DOORS

[www.stetsonbuildingproducts.com](http://www.stetsonbuildingproducts.com)



## **FOAMULAR INSULATION 400 BOARD**

Owens Corning

Owens Corning FOAMULAR 400 is a high-density insulation designed for use in engineered applications requiring additional load bearing capability. It is comprised of an extruded polystyrene closed-cell foam panel with continuous skin face and back surfaces. Owens Corning's patented Hydrovac® process technology makes the unique closed-cell structure of FOAMULAR insulation highly resistant to moisture, retaining its excellent R-value year after year - even following prolonged exposure to humidity, condensation, ground water and freeze/thaw cycling. Classification Type C 578 VI VII V.

High R-value of R-5 per inch of product thickness.

ITEM	# 726543	2" X 4' X 8' SHEET
	# 726544	2" X 2' X 8' SHEET
	# 726545	3" X 4' X 8' SHEET



## **FOAMULAR INSULATION 600 BOARD**

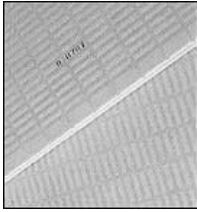
Owens Corning

Owens Corning FOAMULAR 600 is a high-density insulation designed for use in engineered applications requiring additional load bearing capability. It is comprised of an extruded polystyrene closed-cell foam panel with continuous skin face and back surfaces. Owens Corning's patented Hydrovac® process technology makes the unique closed-cell structure of FOAMULAR insulation highly resistant to moisture, retaining its excellent R-value year after year - even following prolonged exposure to humidity, condensation, ground water and freeze/thaw cycling. Classification Type C 578 VI VII V.

High R-value of R-5 per inch of product thickness.

ITEM	# 726546	2" X 2' X 8' SHEET
	# 726547	1 1/2" X 2' X 8' SHEET
	# 726548	3' X 2' X 8' SHEET

Cedar Rapids, IA (800) 383-7272 • Des Moines, IA (800) 383-2181  
Dubuque, IA (800) 894-6272 • Grand Island, NE (800) 228-8572

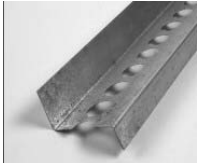


### **1 1/2" x 4' x 8' INSUL DRAIN**

Owens Corning

Designed for residential and commercial foundations  
 Fabric covered channels drain water from vertical foundation walls  
 High R-value improves foundation thermal performance  
 Provides protection for waterproofing membrane  
 Tongue and groove edges help seal joints.

ITEM # 726549



### **2" X 8'6" FURRING STRIP**

ITEM # 726580

## **PANELS**

### **ARCHITECTURAL PANELS**

#### **PANEL 15 4' x 8' STATUARY BRONZE**

Citadel Architectural Products

Panel 15® is a composite panel made by laminating a textured aluminum skin to a substrate of douglas fir exterior grade plywood. A fiberglass reinforced kraft/foil scrim backer is added for panel balance and acts as a moisture barrier. These panels are ideal for applications such as; claddings, canopies, fascia, accent bands, and soffits.

Panel 15® is also ideal for many other applications where durability, strength, and overall cost are primary concerns.

ITEM	# 742018	ONE SIDED
	# 742050	TWO SIDED

