

# THERMAL/WATERPROOFING/ DOORS

[www.stetsonbuildingproducts.com](http://www.stetsonbuildingproducts.com)

## EIFS/STUCCO/ACCESSORIES



### BASE COATS & ADHESIVES

FOR ALL EIFS PRODUCTS, YOU MUST BE AN APPROVED APPLICATOR. PLEASE CALL YOUR LOCAL STETSON OFFICE FOR MORE INFORMATION.

#### **STANDARD BASE COAT**

Degussa Wall Systems

100% acrylic base coat and adhesive that is field-mixed with Type 1 or Type II Portland cement.

ITEM # 716400      5 GALLON PAIL

#### **ALPHA BASE COAT**

Degussa Wall Systems

Dry-mix polymer adhesive and base coat containing Portland cement, and requiring only water for mixing.

ITEM # 716402      5 GALLON PAIL

#### **ALPHA DRY BASE COAT**

Degussa Wall Systems

Alpha Dry Base Coat is a factory- prepared, dry-mix cementitious base coat. Alpha Dry Base Coat has the same applications as regular Alpha Base Coat but with the added convenience of a bagged product. Portland cement is already included in the dry base mix; only clean, potable water needs to be added to Alpha Dry Base Coat.

ITEM # 716404      50 LB. BAG

#### **NC-II BASE COAT**

Degussa Wall Systems

100% acrylic polymer-based, non-cementitious base coat and adhesive that is factory-mixed and ready to use directly from the pail.

ITEM # 716406      5 GALLON PAIL



Cedar Rapids, IA (800) 383-7272 • Des Moines, IA (800) 383-2181  
Dubuque, IA (800) 894-6272 • Grand Island, NE (800) 228-8572

**XTRA-STOP BASE COAT**

Degussa Wall Systems

100% acrylic base coat and adhesive that is field-mixed with Type 1 or Type 11 Portland cement. Noted for its water resistance properties.

ITEM # 716410 5 GALLON PAIL

**SENERQUICK ADHESIVE**

Degussa Wall Systems

Senerquick Adhesive is a 100% acrylic polymer non-cementitious, factory-mixed, adhesive that is ready to use directly from the pail. Senerquick's buttery consistency makes it easy to spread with little effort. As its name suggests, Senerquick Adhesive is for adhesive purposes only. It is specially formulated to adhere insulation board to unpainted and unglazed unit masonry or concrete, gypsum sheathing and Dens-Glass Gold substrates. Senerquick Adhesive is not intended as a high-build product.

ITEM # 716422 5 GALLON PAIL

**SENERSHIELD**

Degussa Wall Systems

A 100% acrylic-based, fiber-reinforced liquid applied air/weather resistive barrier that is field-mixed with Type 1 or Type 11 Portland cement.

ITEM # 716570 5 GALLON PAIL

**SENERSHIELD R**

Degussa Wall Systems

Ready-mixed flexible coating that is roller- or brush-applied directly to approved wall substrates and that function as an air and weather barrier. Provides excellent secondary moisture protection to Senergy Wall Systems.

ITEM # 716572 5 GALLON PAIL

**ADHESIVE GROUND COAT**

Degussa Wall Systems/Sonowall

Uses of Adhesive Ground Coat

- To adhere EPS insulation board to approved substrates
- To adhere EPS insulation board to EPS insulation board
- As a base coat to embed StuccoMesh reinforcing mesh

ITEM # 716294 50 LB. BAG



# THERMAL/WATERPROOFING/ DOORS

www.stetsonbuildingproducts.com



## **STUCCOBASE**

Degussa Wall Systems/Sonowall

StuccoBase is a cement-based, fiber-reinforced base coat for HardWall applications.

ITEM # 716295 80 LB. BAG

## **FINISHES AND TINT BASES**

### **SENERGY FINISH COAT**

Degussa Wall Systems

Senergy's 100% acrylic polymer based finish coats are attractive, durable, and weather-resistant. All are factory mixed and available in a wide variety of colors. Except as noted, Senergy finish coats are typically trowel-applied to the wall surface. Used over EIFS, stucco or interior wall surfaces.

**FOUR BASES AVAILABLE: CLEAR, MAXI-WHITE, MEDIUM, & DARK VARIETIES OF FINISHES ARE AVAILABLE.**

**Available Finishes are:**

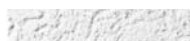
### **FINISHES AND TINT BASES**



*Fine Finish* - contains fine aggregate to provide a uniform, sand-like appearance.



*Sahara Finish* - contains varied aggregate sizes for a uniform, pebbled appearance.



*Classic Finish* - when floated with a trowel, the varied aggregate sizes in this finish provide a classic worm-holed appearance.



*Belgian Lace Finish* - a finer version of "Classic".



*Aurora Stone Finish* - a spray and trowel applied finish that delivers a rich natural stone-like appearance.



*Texture Finish* - very fine aggregate provides a smooth, fine finish that offers a variety of textured appearances such as stipple, skip-trowel, and lace.

**ALL FINISHES CAN BE TINTED OR MATCHED TO COLOR OF CHOICE. PLEASE CONTACT YOUR LOCAL STETSON BUILDING PRODUCTS OFFICE FOR MORE DETAILS AND INFORMATION.**

Cedar Rapids, IA (800) 383-7272 • Des Moines, IA (800) 383-2181  
Dubuque, IA (800) 894-6272 • Grand Island, NE (800) 228-8572



## **STUCCOLAST FINISH**

Degussa Wall Systems/Sonowall

StuccoLast Finish is a 100% acrylic-based, textured elastomeric finish.

**VARIETIES OF FINISHES ARE AVAILABLE. FINE FINISH, MEDIUM FINISH, MEDIUM RILLED FINISH, AND COARSE FINISH AVAILABLE IN 5 GALLON PAILS.**

## **PRIMERS AND PAINTS**

### **SENERPRIME**

Degussa Wall Systems

Black-tinted, 100% acrylic-based sheathing primer. (For Plywood)

ITEM # 716424 5 GALLON PAIL

### **TINTABLE PRIMER**

Degussa Wall Systems

100% acrylic-based primer, available in a variety of colors to closely match any standard or custom Senergy Finish Color

ITEM # 716519	PASTEL BASE	5 GALLON PAIL
# 716520	MEDIUM BASE	5 GALLON PAIL
# 716521	DEEP BASE	5 GALLON PAIL

### **FLASHING PRIMER**

Degussa Wall Systems

SENERGY FLASHING PRIMER is a single-component, water-based primer specially formulated for use with SENERFLASH and SENERWRAP.

ITEM # 716584	1 GALLON PAIL
# 716586	5 GALLON PAIL

## **REINFORCING MESH AND DRAINAGE MATS**

### **STARTER ROLLS 4 oz. (Detail Mesh)**

Degussa Wall Systems

Pliable fiberglass mesh used for detail work and back wrapping.

ITEM # 716446 9" X 150 LF. ROLL

# THERMAL/WATERPROOFING/ DOORS

www.stetsonbuildingproducts.com



## **CORNER GRID**

Degussa Wall Systems

Intermediate fiberglass mesh used at exterior corners when added impact resistance or clean, crisp corners are desired. Pre-marked for easy bending.

ITEM # 716448 9 1/2" X 164' ROLL

## **FLEXGUARD MESH (Standard Mesh)**

Degussa Building Systems

Fiberglass mesh, available in different weights for varying impact resistance.

ITEM # 716456 #4 38" X 150 LF. ROLL  
# 716460 #10/#12 38" X 75 LF. ROLL

## **SELF ADHERING MESH**

Degussa Building Systems

Fiberglass mesh, available in different weights for varying impact resistance.

ITEM # 716560 4" X 150 LF ROLL  
# 716562 9" X 481 LF ROLL

## **SENERWRAP**

Degussa Building Systems

SENERWRAP is a 20-mil thick, self-sealing, self-healing rubberized asphalt coating laminated to polyethylene film. SENERWRAP is supplied in rolls, on release paper, for easy application.

ITEM # 716576 9" X 150 LF ROLL

## **SENERFLASH**

Degussa Building Systems

SENERFLASH is a patented, 30-mil thick, self-sealing, self-healing composite membrane of polyester fabric and rubberized asphalt. SENERFLASH is compatible with SENERGY Base Coats and SENERSHIELD Air/Weather Barrier. SENERFLASH is supplied in rolls, on release paper, for easy application.

ITEM # 716580 4" X 100 LF ROLL  
# 716582 9" X 100 LF ROLL

**Senergy**

*Build with confidence™*

**Senergy**

*Build with confidence™*

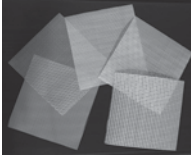
Cedar Rapids, IA (800) 383-7272 • Des Moines, IA (800) 383-2181  
Dubuque, IA (800) 894-6272 • Grand Island, NE (800) 228-8572

**REINFORCING FABRIC**

Degussa Building Systems

Used with Senershield R air moisture barrier as reinforcement over acceptable sheathing joints, rough openings and at terminations.

ITEM # 716590 R-4 4" X 180 LF ROLL  
# 716592 R-9 9" X 180 LF ROLL

**STUCCOMESH (DETAIL MESH)**

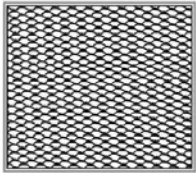
Degussa Building Systems/Sonowall

StuccoMesh is a line of flexible, balanced open weave, glass fiber meshes that are used with SonoWall base coats and secondary air/weather barriers to increase impact resistance and reinforce the overall strength of the system.

ITEM # 716297 9" X 150 LF ROLL  
# 716298 38" X 150 LF ROLL

**METAL AND PLASTIC LATH****DIAMOND MESH METAL LATH**

Alabama Metals



Diamond Mesh Lath is manufactured by slitting and stretching galvanized steel to form small opening to allow the keying of plaster so it will bond to the lath. Each sheet has square ends and smooth parallel edges for fast, easy handling and installation. Diamond Mesh Lath can be bent easily to create curved surfaces.

ITEM # 315085 2.5# 27" X 96"  
# 315087 3.4# 27" X 96"

**STUCCO AND BAG GOODS****ONE COAT STUCCO CONCENTRATE MIX**

(Needs Sand & Water)

Degussa Building Systems

Factory-blended mixture of Portland cement, reinforcing fibers, and other proprietary ingredients. SENERGY ONE-COAT STUCCO CONCENTRATE requires the addition of 45.4 - 90.7 kg (180 - 220 pounds) of plaster sand conforming to ASTM C144 and 15.4 - 17 liters (4 - 7 gallons) of potable water.

ITEM # 716416 80 LB. BAG  
ALSO AVAILABLE IN NON-CONCENTRATE MIX (100 LB. BAG) SPECIAL ORDER ONLY

# THERMAL/WATERPROOFING/ DOORS

[www.stetsonbuildingproducts.com](http://www.stetsonbuildingproducts.com)

## **THOROSEAL PLASTER MIX**

Degussa Building Systems

Cementitious waterproof coating for stucco, concrete, brick, and masonry; hides, fills and seals; provides texture and color uniformity; water vapor permeable; excellent adhesion to mineral substrates; easy to apply by trowel or spray; wide variety of textured finishes possible.

ITEM # 336178      80 LB. BAG      STANDARD GRAY

---

## **MISC. EIFS ITEMS**

### **STARTER BOARD**

Iowa EPS

Pre-based EPS Board for EIFS systems.

ITEM # 723150      1" X 9 1/2" X 8'  
# 723154      2" X 9 1/2" X 8'  
# 723156      3" X 9 1/2" X 8'

---

## **MISC EIFS/PLASTER/MASONRY**

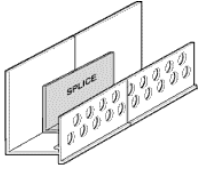
### **2"X60 YARDS RED POLYETHYLENE FILM TAPE**

Tape Products

Low density polyethylene film tape. Its tough polyethylene backing offers good abrasion and tear resistance. Low tack adhesive for surface protection applications.

ITEM # 716547



**STARTER TRAC**

Vinyl Corp

Designed by Vinyl Corp. as a base support starter strip with drip leg for exterior insulated wall. Perforated flange allows matrix to easily flow thru and anchor to substrate. Drip leg moves moisture away from openings or foundation wall. All have Vinyl Corp.'s patented "Key Lock" splice to reinforce butt joints. Caulk all Intersections, Butt Joints and Ends.

ITEM # 716310	1 1/2" X 10' CBS150-332
# 716312	2" X 10' CBS200-332
# 716318	1" X 10' CBS100-16D (WITH DRIP EDGE)
# 716320	1 1/2" X 10' CBS150-16D (WITH DRIP EDGE)
# 716322	2" X 10' CBS200-16D (WITH DRIP EDGE)
# 716330	1" X 10' CBS100-16W (WITH WEEP HOLES)
# 716332	1 1/2" X 10' CBS150-16WB (WITH WEEP HOLES)
# 716334	2" X 10' CBS200-16WB (WITH WEEP HOLES)

**1" THICK SOFFIT VENT**

Vinyl Corp

One-piece Soffit Vent, designed for soffit board, and may be combined with Starter Strip/Casing Beads or DEFS Casing Beads. Vinyl Corp.'s., "Vent Clips" are provided to connect Soffit Vent and assist in alignment. Vent area: 4 square inches per lineal ft.

ITEM # 716340	CBS100-200V	10' LONG
---------------	-------------	----------

**ACCESS DOORS****ENTRY DOORS****S20 2'6"X3' GALVANIZED STEEL ROOF HATCH**

Bilco



Type S, 36" x 30" (914mm x 762mm), the easy one-hand operation to the fully open or close position provides the ladder user the security of having one hand firmly on the ladder at all times. Available in galvanized steel or aluminum construction.

ITEM # 831360	(HINGED ON 2'6" SIDE)
---------------	-----------------------