

**PARASEAL LG WATERPROOFING**

Tremco

Paraseal LG is a multi-layer sheet membrane waterproofing system. It consists of a self-sealing, expandable layer of granular bentonite laminated at the rate of up to one pound per square foot to an impermeable, high-density polyurethane (HDPE). The third component is a protective layer of spun polypropylene. Together, these three components form a tough, high performance waterproofing membrane manufactured in controlled thicknesses of 170 mils to 200 mils, specially designed for blindside installations such as lagging, under floor and elevator pits. Paraseal LG also withstands applications where shotcrete is blown directly into the face of the membrane.

ITEM # 794370 4'X24' ROLL 20 MILS THICK

**PARAGRANULAR SODIUM BENTONITE**

Tremco

A premium, Wyoming type, high swelling, granular, sodium bentonite. When in the presence of water, Paragranular reacts and forms an impervious waterproof gel. Paragranular is designed to work in conjunction with Paraseal products to form a waterproof transitional seal. It is used to form a cove at all horizontal to vertical transition, at floor/wall transitions and penetrations through horizontal surfaces, and to fill voids around irregularities.

ITEM # 794425 50 LB. BAGS

## LOOKING FOR BENTONITE WATERPROOFING ACCESSORIES? SEE PAGE 4.19.

### BITUMINOUS WATERPROOFING

**BITUTHENE 3000 MEMBRANE**

W.R. Grace

Bituthene® System 3000 and Bituthene Low Temperature are self-adhesive, rubberized asphalt/polyethylene waterproofing membranes used in basements and sub-structures. Cross laminated film—provides dimensional stability, high tear strength, puncture and impact resistance; Cold applied—no flame hazard, self-adhesive overlaps ensure continuity; Chemically resistant—provides effective external protection against aggressive soils and ground water; Flexible—accommodates minor settlement and shrinkage movement.

ITEM # 717400 36"X66.7' ROLL

Omaha, NE (800) 383-1272 • Rockford, IL (800) 383-3808  
Rock Island, IL (800) 383-1240 • Waterloo, IA (800) 383-2959

# THERMAL/WATERPROOFING/ DOORS

[www.stetsonbuildingproducts.com](http://www.stetsonbuildingproducts.com)



## **BITUTHENE 4000 MEMBRANE (SURFACE CONDITIONER INCLUDED)**

W.R. Grace

Self-adhesive HDPE waterproofing membrane with super tacky compound for use with patented, water-based System 4000 Surface Conditioner; Bituthene® System 4000 is a 1.5 mm (1/16 in.) flexible, pre-formed waterproof membrane which combines a high performance, cross laminated, HDPE carrier film with a unique, super tacky, rubberized asphalt compound. System 4000 Surface Conditioner is a unique, water-based, latex surface treatment, which imparts an aggressive, high tack finish to the treated substrate.

ITEM # 717404 3'X66.7' ROLL



## **BITUTHENE 5000 MEMBRANE**

W. R. Grace

Bituthene® 5000 Waterproofing Membrane is ideal for waterproofing concrete surfaces on which hot asphaltic concrete overlays are installed, such as on parking decks and bridges where in-service temperatures will not exceed 54 degrees Celsius (130 degrees Fahrenheit). Durable, self-adhesive waterproofing membrane engineered to accept hot asphaltic overlays; Bituthene® 5000 Waterproofing Membrane is a factory-made composite product with a nominal thickness of 1.7 mm (0.065 in.). It is composed of 1.4 mm (0.056 in.) of rubberized asphalt and a layer of heat-resistant, woven polypropylene mesh.

ITEM # 717406 3'X66.7' ROLL



## **BITUTHENE LOW TEMPERATURE MEMBRANE**

W. R. Grace

Waterproof—high hydrostatic head resistance; Cross laminated film—provides dimensional stability, high tear strength, puncture and impact resistance; Cold applied—no flame hazard, self-adhesive overlaps ensure continuity; Chemically resistant—provides effective external protection against aggressive soils and ground water; Flexible—accommodates minor settlement and shrinkage movement. Bituthene® Low Temperature—surface and ambient temperatures between -4 degrees Celsius (25 degrees Fahrenheit) and 16 degrees Celsius (60 degrees Fahrenheit). Bituthene is extremely flexible. It is capable of bridging shrinkage cracks in the concrete and will accommodate minor differential movement throughout the service life of the structure.

ITEM # 717408 36" X 66.47' ROLL

Cedar Rapids, IA (800) 383-7272 • Des Moines, IA (800) 383-2181  
Dubuque, IA (800) 894-6272 • Grand Island, NE (800) 228-8572

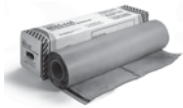


## **PREPRUFE 300R WATERPROOFING MEMBRANE**

WR Grace

Pre-applied waterproofing membranes that bond integrally to poured concrete for use below slabs or behind basement walls on confined sites. Preprufe® 300R membrane is a unique composite sheets comprising a thick HDPE film, an aggressive pressure sensitive adhesive and a weather resistant protective coating. The Preprufe R System includes: Preprufe 300R—heavy-duty grade for use below slabs and on rafts (i.e., mud slabs). Designed to accept the placing of heavy reinforcement using conventional concrete spaces.

ITEM # 717492 4' X 98' ROLL



## **MEL-ROL WATERPROOFING**

W.R. Meadows

SEALTIGHT MEL-ROL Waterproofing System is a flexible, versatile, dependable, roll-type waterproofing membrane. It is composed of a nominally 56 mil thick layer of polymeric waterproofing membrane on a heavy-duty, 4 mil thick, cross-laminated polyethylene carrier film. The two components are laminated together under strict quality-controlled, production procedures. All components of the MEL-ROL Waterproofing System including SEALTIGHT MEL-PRIME Primer, SEALTIGHT Pointing Mastic, SEALTIGHT Detail Strips and MEL-ROL Waterproofing Membrane to provide a cost-effective, positive waterproofing system that's quick and easy-to-apply.

ITEM # 717010 38 1/2" X 60' ROLL

## **MEL-ROL LIQUID MEMBRANE**

W.R. Meadows

A two-component material used as a flashing, to form fillets at corners and at protrusions. May be used as a substitute for the Pointing Mastic.

ITEM # 717003 1 GAL PAIL

**FOR BITUMINOUS WATERPROOFING  
ACCESSORIES, SEE PAGE 4.14.**